

**STATE OF VERMONT**  
**DOMESTIC VIOLENCE**  
**FATALITY REVIEW COMMISSION**  
**STATISTICAL REPORT**



**JANUARY 2004**

## TABLE OF CONTENTS

Dedication	
Introduction .....	1
Commission and Membership .....	1
Summary of Commission's Activities for 2003 .....	2
Homicide and Domestic Violence Related Fatalities Chart for 1994-2003 .....	4
Summary of Data from 1994-2003 .....	5
Domestic Violence Related Homicide Charts .....	6
Data for 1994-2003 .....	7

### Appendices

Appendix A: H. 728 .....	i
Appendix B: Definition of Domestic Violence Related Fatality .....	iii
Appendix C: Commission Membership List .....	iv
Appendix D: Data for Individual Years from 1994 – 2003 .....	viii
1994 .....	viii
1995 .....	ix
1996 .....	x
1997 .....	xi
1998 .....	xii
1999 .....	xiii
2000 .....	xiv
2001 .....	xv
2002 .....	xvi
2003 .....	xvii
Appendix E: Commission Case Referral Form .....	xix

## **DEDICATION**

In 2003, there were fifteen homicides in Vermont, nine were domestic violence related. This report is dedicated to the victims and the families affected by this tragic violence.

## **INTRODUCTION**

On May 2, 2002, then Governor Howard Dean signed into law H. 728 which created Vermont's Domestic Violence Fatality Review Commission. See Appendix A for a copy of the Bill. The purpose of the Commission is to collect data and conduct in-depth reviews of domestic violence related fatalities in Vermont with the goal of making policy recommendations as to prevention. Vermont joined 28 other states and the District of Columbia in creating a multi-disciplinary domestic violence fatality review group. The theory behind all these review groups is that by examining data and information the Commission will be better able to understand why and how a fatality occurred and what Vermont can do to prevent these tragedies.

In 2002, the year that the Commission was created, there was a decline in domestic violence related homicides and overall reported crimes. However, there was also a disturbing increase in intimate partner related violent crime.

In 2002, there were ten homicides and one met the Commission's definition of a domestic violence related fatality. See Appendix B for the Commission's definition. According to the 2002 Vermont Crime Report from the Vermont Department of Public Safety, the total number of reported crimes declined by nearly 3.5% from 2001, the second year in a row that the overall number has declined.<sup>1</sup> Disturbingly, in the same year, rapes increased 19% and aggravated assaults 10%.<sup>2</sup> Additionally, this was the third year in a row that reported aggravated assaults increased in Vermont.<sup>3</sup> The typical victim of a violent crime in Vermont tends to be a white female in her twenties and the victim and assailant were known to each other in 87% of violent crime incidents.<sup>4</sup>

The Vermont Crime Report for 2002 illustrates that intimate partner crimes are on the rise in Vermont. This trend is illustrated by the increase in 2003 of homicides to 15 with 9 meeting the Commission's definition of domestic violence related fatalities. The percentage of domestic violence related homicides in Vermont increased from 10% of the total homicides in 2002 to 59.9% in 2003.

## **COMMISSION AND MEMBERSHIP**

The Domestic Violence Fatality Review Commission operates under the auspices of the Office of Attorney General in consultation with the Vermont Council on Domestic Violence pursuant to 15 VSA Sec. 1140.

Under 15 VSA Sec. 1140, the purposes of the Commission are:

- to examine the trends and patterns of domestic violence related fatalities in Vermont;
- to identify barriers to safety, the strengths and weaknesses in communities, and systemic responses to domestic violence;
- to educate the public, service providers and policymakers about domestic violence fatalities and strategies for intervention and prevention; and

---

<sup>1</sup> 2002 Vermont Crime Report at [www.dps.state.vt.us](http://www.dps.state.vt.us).

<sup>2</sup> Id.

<sup>3</sup> Id.

<sup>4</sup> Id.

- to recommend policies, practices and services that will encourage collaboration and reduce fatalities due to domestic violence.

Pursuant to 15 VSA Sec. 1140(b), the Commission is comprised of 15 members, consisting of the following:

- The Attorney General, or his or her designee;
- The Commissioner of the Department of Health, or his or her designee;
- The Commissioner of Social and Rehabilitation Services, or his or her designee;
- The Commissioner of the Department of Corrections, or his or her designee;
- The Commissioner of the Department of Public Safety, or his or her designee;
- The Chief Medical Examiner, or his or her designee;
- A State's Attorney with experience prosecuting domestic violence cases, appointed by the Executive Director of the Vermont State's Attorneys' Association;
- The Defender General, or his or her designee;
- A member of the Vermont Coalition of Batterer Intervention Services;
- A member of the Vermont Network Against Domestic Violence and Sexual Assault;
- A representative of the Vermont Council on Domestic Violence;
- A representative of local law enforcement, appointed by the Governor;
- A victim or survivor of domestic violence, appointed by the Vermont Network Against Domestic Violence and Sexual Assault;
- A physician, appointed by the Governor; and
- The Executive Director of the Vermont Criminal Justice Training Council, or his or her designee.

Appendix C lists the current members of the Commission.

### **SUMMARY OF COMMISSION'S ACTIVITIES IN 2003**

In January of 2003, the Commission issued its first Biennial Report. As required by 15 VSA Sec. 1140, the Commission distributed its report to the General Assembly, the Governor, the Chief Justice of the Vermont Supreme Court and the Council on Domestic Violence. The statute also allows the Commission to issue data and other information periodically. This Statistical Report reflects the data and information that the Commission has collected over the last year.

Since the Commission's Biennial Report of January 2003, the Commission met bi-monthly and the Executive Committee met monthly. Two members of the Commission attended a national training regarding domestic violence fatality review groups. The Commission continued to develop protocols and policies to supplement the Commission's original policies. The Commission adopted the following protocols:

- Appointment Protocol
- Conflict of Interest and Recusal Protocol
- Law Enforcement Reporting Protocol
- Mandatory Reporting Protocol
- Criteria for Case Review
- Protocol for Full Case Review

- Protocol for Confidentiality Agreement for Witnesses
- Confidentiality Agreement for Witnesses

A citizen has referred one case to the Commission for full case review and the Executive Committee is determining whether the referral meets the Commission's criteria for review. The Commission plans to conduct in-depth full case reviews in 2004 which will be reflected in the Commission's second Biennial Report of January 2005.

Over the past year, the Commission concentrated on collecting data regarding domestic violence related fatalities for the last ten years. This report presents the data and information collected.

Domestic violence related fatalities constitute slightly more than half of all homicides in Vermont over the last ten years. According to Commission data, 53% of all homicides during the past ten years are domestic violence related. In addition when the data incorporates suicides that followed domestic violence related homicides (i.e. murder/suicides) the percentage increases to 65%. Sixty-one (61) percent of the domestic violence related homicides are committed with firearms and 75% of the suicides associated with the homicides (i.e. murder/suicides) are committed with firearms.

The Commission asks that all Vermonters review this report and provide us with comments and thoughts as we continue to study the trends and patterns of domestic violence related fatalities. The Commission also encourages the public to refer matters for the Commission's review. A case referral form is attached at Appendix E.

Domestic violence remains a tragic and serious public safety and health issue in Vermont. The Commission is dedicated to playing an integral role in the coordinated community response to domestic violence with the hope of reducing fatalities and improving Vermont's strategies for intervention and prevention.

## HOMICIDE AND DOMESTIC VIOLENCE RELATED FATALITIES CHART 1994-2003

Year	Total # Homicides	Partner	Ex-Partner	Family Member	Household Member	DV Related	Total # DV	Total % DV
2003	15 <sup>5</sup>	1	2	3	1	2	9	59.9
2002	10 <sup>6</sup>	1	0	0	0	0	1	10
2001	13 <sup>7</sup>	0	0	3	1	1	5	38
2000	16 <sup>8</sup>	3	1	2	0	2	8	50
1999	18 <sup>9</sup>	2	1	3	2	2	10	56
1998	12 <sup>10</sup>	3	2	1	0	1	7	58
1997	11 <sup>11</sup>	2	1	2	0	2	7	64
1996	12 <sup>12</sup>	1	2	2	1	2	8	67
1995	13 <sup>13</sup>	6	0	0	0	1	7	54
1994	7 <sup>14</sup>	1	1	1	0	2	5	71
<b>TOTAL</b>	<b>127</b>	<b>20</b>	<b>10</b>	<b>17</b>	<b>5</b>	<b>15</b>	<b>67</b>	<b>53</b>

### DV – Domestic Violence

**Partner** – Homicide where the responsible party and victim are intimate or dating partners (e.g. spouse kills spouse, boyfriend kills girlfriend)

**Ex-Partner** – Homicide where the responsible party and victim were intimate partners formerly but are not currently (e.g., divorced spouse kills spouse, ex-girlfriend kills ex-boyfriend)

**Family Member** – Homicide where the responsible party and the victim were not intimate partners or dating partners but are family members (e.g., parent kills child, child kills parent)

**Household Member** – Homicide where responsible party and victim currently or formerly lived in the same household but were not intimate or dating partners or family members (e.g., child living with non-related caregiver)

**DV Related** – Homicide where the responsible party and the victim fit none of the above relationships but the fatality is related to domestic violence (e.g. estranged spouse kills ex-spouse's current intimate partner, law enforcement officer kills person while responding to a domestic violence incident)

<sup>5</sup> 2 cases remain under investigation and are reflected in the total number of homicides but the Commission is unable to determine if they are domestic violence related. The data will be updated when further information is available. 1 additional case involves a child fatality and is not reflected in the 15 as the matter is being referred to the Child Fatality Review Committee per the Commission's protocol.

<sup>6</sup> 1 case remains under investigation and is reflected in the total number of homicides but the Commission is unable to determine if it is domestic violence related. The data will be updated when further information is available.

<sup>7</sup> 1 case remains under investigation and is reflected in the total number of homicides but the Commission is unable to determine if it is domestic violence related. The data will be updated when further information is available.

<sup>8</sup> In addition to these 16 cases, 1 responsible party committed suicide following the homicide.

<sup>9</sup> In addition to these 18 cases, 2 responsible parties committed suicide following the homicides. Also, 1 case remains under investigation and is reflected in the total number of homicides but the Commission is not able to determine if it is domestic violence related fatality at this time. The data will be updated when that information is available.

<sup>10</sup> In addition to these 12 cases, 3 responsible parties committed suicide following the homicides.

<sup>11</sup> In addition to these 11 cases, 2 responsible parties committed suicide following the homicides.

<sup>12</sup> In addition to these 12 cases, 3 responsible parties committed suicide following the homicides. Also, 1 case remains under investigation and is included in the total homicide number but not the domestic violence number. The data will be updated when further information is available.

<sup>13</sup> In addition to these 13 cases, 4 responsible parties committed suicide following the homicides and 2 cases remain under investigation and are reflected in the total number of homicides but not in the domestic violence number. The data will be updated when further information is available.

<sup>14</sup> In addition to these 7 cases, 1 responsible party committed suicide after the homicide.

## SUMMARY OF DATA FROM 1994 – 2003

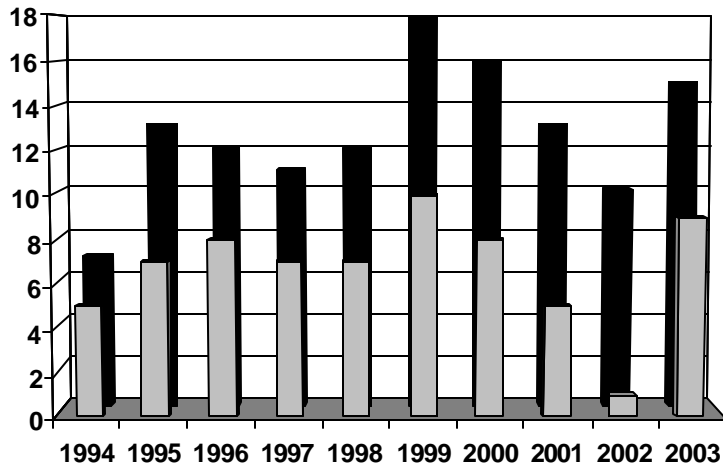
Homicides	Total	127		
Domestic Violence Related	Total	67 or 53%		
	• Female victims	37		
	• Male Victims	30		
	Responsible Party			
	• Female	11		
	• Male	56		
Relationship	Partner	20		
	Ex Partner	10		
	Family Member	17		
	Household Member	5		
	Domestic violence related	15		
County Distribution	Addison	9	Lamoille	2
	Bennington	3	Orange	3
	Caledonia	6	Orleans	4
	Chittenden	12	Rutland	12
	Essex	0	Washington	4
	Franklin	3	Windham	3
	Grand Isle	0	Windsor	6
	Manner	Firearm	40	
Stabbing		9		
Fire		2		
Blunt trauma		8		
Strangulation		3		
Motor Vehicle		1		
Other		4		
Children Present	At crime scene	12		
	Aware of crime scene immediately before or after the fact	5		
Law Enforcement Related Cases	2 (2 cases where domestic violence suspects were killed by law enforcement)			
Suicides related to domestic violence	16 <sup>15</sup>			
	• Female	1		
	• Male	15		
Manner	Firearm	12		
	Stabbing	1		
	Hanging	1		
	Asphyxia by Fire	1		
	Asphyxia by Carbon Monoxide	1		

<sup>15</sup> When these suicide figures are combined with the domestic violence related homicide numbers for 1994-2003, the percentage of homicides that are domestic violence related is 65%.

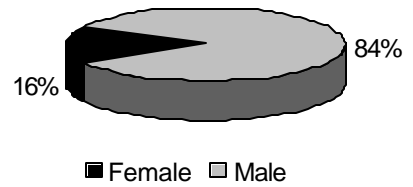


# DOMESTIC VIOLENCE RELATED HOMICIDE CHARTS

Homicides 1994-2003



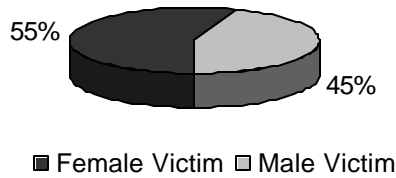
Gender of Responsible Party



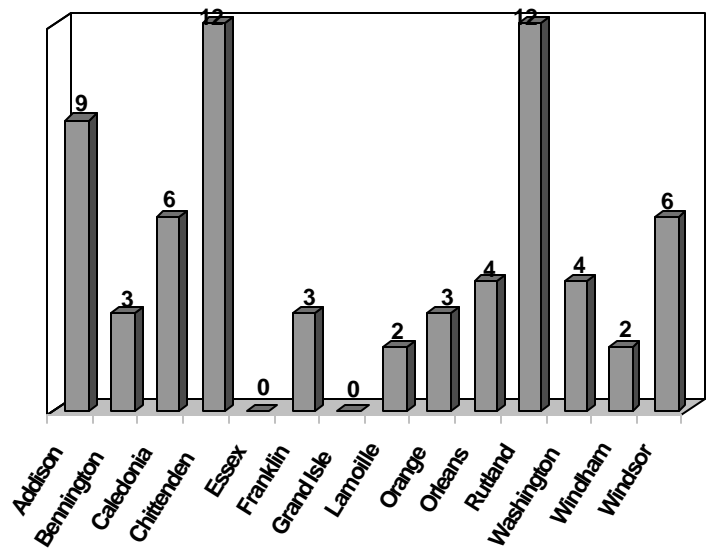
Domestic Violence Related Homicides Total Homicides

Domestic Violence Related Homicides by County 1994 - 2003

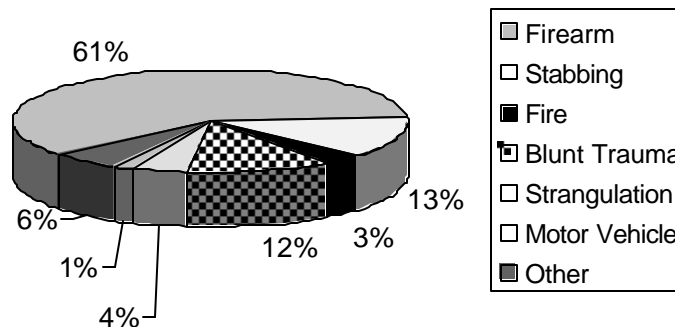
Gender of Victim



Female Victim Male Victim



Domestic Violence Related Homicides 1994-2003 Method



## **DATA FOR 1994 - 2003**

The individual data sheets for each year from 1994 through 2003 are attached for your review in Appendix D.

## Appendix A

### NO. 88. AN ACT RELATING TO THE DOMESTIC VIOLENCE FATALITY REVIEW COMMISSION.

(H.728)

It is hereby enacted by the General Assembly of the State of Vermont:  
Sec. 1. 15 V.S.A. chapter 21, subchapter 2 is added to read:

#### Subchapter 2. Domestic Violence Fatality Reviews

#### § 1140. DOMESTIC VIOLENCE FATALITY REVIEW COMMISSION

(a) The domestic violence fatality review commission is established within the office of the attorney general, in consultation with the council on domestic violence, for the following purposes:

(1) To examine the trends and patterns of domestic violence-related fatalities in Vermont.

(2) To identify barriers to safety, the strengths and weaknesses in communities and systemic responses to domestic violence.

(3) To educate the public, service providers and policymakers about domestic violence fatalities and strategies for intervention and prevention.

(4) To recommend policies, practices and services that will encourage collaboration and reduce fatalities due to domestic violence.

(b) The commission shall be comprised of 15 members, consisting of the following:

(1) the attorney general, or his or her designee;

(2) the commissioner of the department of health, or his or her designee;

(3) the commissioner of social and rehabilitation services, or his or her designee;

(4) the commissioner of the department of corrections, or his or her designee;

(5) the commissioner of the department of public safety, or his or her designee;

(6) the chief medical examiner, or his or her designee;

(7) a state's attorney with experience prosecuting domestic violence cases, appointed by the executive director of the Vermont state's attorneys' association;

(8) the defender general, or his or her designee;

(9) a member of the Vermont coalition of batterer intervention services;

(10) a member of the Vermont network against domestic violence and sexual assault;

(11) a representative of the Vermont council on domestic violence;

(12) a representative of local law enforcement, appointed by the governor;

(13) a victim or survivor of domestic violence, appointed by the Vermont network against domestic violence and sexual assault;

(14) a physician, appointed by the governor; and

(15) the executive director of the Vermont criminal justice training council, or his or her designee.

(c) In any case subject to review by the commission, upon written request of the commission, a person who possesses information or records that are necessary and relevant to a domestic violence fatality review shall, as soon as practicable, provide the commission with the information and records. A person who provides information or records upon request of the commission is not criminally or civilly liable for providing information or records in compliance with this section. The commission shall review fatalities which are not under investigation and fatalities in cases that are post adjudication which have received a final judgment.

(d) The proceedings and records of the commission are confidential and are not subject to subpoena, discovery or introduction into evidence in a civil or criminal action. The commission shall disclose conclusions and recommendations upon request, but may not disclose information, records or data that are otherwise confidential, such as autopsy records. The commission shall not use the information, records or data for purposes other than those designated by subsections (a) and (g) of this section.

(e) The commission is authorized to require any person appearing before it to sign a confidentiality agreement created by the commission in order to maintain the confidentiality of the proceedings. In addition, the commission may enter into agreements with nonprofit organizations and private agencies to obtain otherwise confidential information.

(f) Commission meetings are confidential, and shall be exempt from chapter 5, subchapter 2 of Title 1 (open meetings law). Commission records are confidential, and shall be exempt from chapter 5, subchapter 3 of Title 1 (public access to records).

(g) The commission shall report its findings and recommendations to the governor, the general assembly, the chief justice of the Vermont supreme court, and the Vermont council on domestic violence no later than the third Tuesday in January of the first year of the biennial session. The report shall be available to the public through the office of the attorney general. The commission may issue data or other information periodically, in addition to the biennial report.

#### Sec. 2. EFFECTIVE DATE

This act shall take effect upon passage, and shall terminate upon termination of grant funding, administered by the Vermont center for crime victim services, from the Violence Against Women office of the United States Department of Justice for an assistant attorney general assigned to the criminal division and designated as a domestic violence coordinator.

Approved: May 2, 2002

## Appendix B - Commission Definition of Domestic Violence Related Fatality

When determining whether a fatality is domestic violence related for data collection and/or full case review, the Executive Committee and the full Commission may consider the following criteria.

Whether:

- a. the alleged perpetrator was related to the victim as a "family member" according to the "plain and commonly accepted meaning" of the term. Donley v. Donley 165 Vt. 619 (1996);
- b. the alleged perpetrator and victim qualify as having a reciprocal beneficiaries relationship as defined at 15 VSA Section 1303 <sup>1</sup>and as noted as "family" in the Abuse Prevention statute at 15 VSA Sec 1101(6)<sup>2</sup>;
- c. the alleged perpetrator and victim were related as "household members" under the Abuse Prevention Act at 15 VSA Sec 1101(2)<sup>3</sup>;
- d. the alleged perpetrator killed an estranged partner's current "household member"<sup>4</sup>;
- e. the alleged perpetrator killed his current partner's estranged "household member"<sup>5</sup>;
- f. the alleged perpetrator killed a family member's current or estranged "household member";<sup>6</sup>
- g. the alleged perpetrator killed bystander(s) while attempting to harm family or "household members";
- h. the alleged perpetrator is a law enforcement officer forced to kill in the line of duty when responding to a domestic violence incident;
- i. a law enforcement officer is killed in the line of duty when responding to a domestic violence incident;
- j. the fatality is domestic violence related but is ruled a justifiable homicide;
- k. the fatality is a murder-suicide matter involving family or household members;
- l. the fatality is a suicide where there is documented history of domestic violence to include victim suicide; alleged perpetrator suicide (as violent act in front of family or household members); alleged perpetrator suicide by law enforcement and teen suicide;
- m. the fatality is a substance abuse related death (chronic abuse, suicide, overdose) that is related to domestic violence.

---

<sup>1</sup> For a reciprocal beneficiaries relationship to be established in Vermont, it shall be necessary that the parties satisfy all of the following criteria: (1) be at least 18 years of age and competent to enter into a contract; (2) Not be a party to another reciprocal beneficiaries relationship, a civil union or marriage; (3) Be related by blood or by adoption and prohibited from establishing a civil union or marriage with the other party to the proposed reciprocal beneficiaries relationship; (4) Consent to the reciprocal beneficiaries relationship without force, fraud or duress. 15 VSA Sec. 1303

<sup>2</sup> "Family" shall include a reciprocal beneficiary. 15 VSA 1101 (6)

<sup>3</sup> "Household members" means persons who, for any period of time, are living or have lived together, are sharing or have shared occupancy of a dwelling, are engaged in or have engaged in a sexual relationship, or minors or adults who are dating or who have dated. "Dating" means a social relationship of a romantic nature. Factors that the court may consider when determining whether a dating relationship exists or existed include: (a) the nature of the relationship; (b) the length of time the relationship existed; (c) the frequency of interaction between the parties; (d) the length of time since the relationship was terminated, if applicable. 15 VSA 1101 (2)

<sup>4</sup> See footnote 3 for definition of "household member"

<sup>5</sup> See Footnote 3 for definition of "household member"

<sup>6</sup> See Footnote 3 for definition of "household member"

**Appendix C - Domestic Violence Fatality Review Commission Members as of  
December 2003**

Ronald Morell

Executive Director VT Criminal Justice Training Council  
Vermont Police Academy  
317 Sanatorium Road  
Pittsford, VT 05763-9712  
483-6228 ext 20 phone  
483-2343 fax  
[rmorell@vcjtc.state.vt.us](mailto:rmorell@vcjtc.state.vt.us)

Alternate:

TJ Anderson

Vermont Criminal Justice Training Council  
Vermont Police Academy  
317 Sanatorium Road  
Pittsford, VT 05763-9712  
483-6228 ext 13 phone  
483-2343 fax  
[tjanderson@vcjtc.state.vt.us](mailto:tjanderson@vcjtc.state.vt.us)

Dr. Don Swartz

Department of Health  
108 Cherry St., PO Box 70  
Burlington, VT 05402  
863-7200 phone  
[dswartz@vdh.state.vt.us](mailto:dswartz@vdh.state.vt.us)

Alternate:

Naomi Clemmons

Department of Health  
108 Cherry St., PO Box 70  
Burlington, VT 05402  
863-7606 phone  
[nclemmons@vdh.state.vt.us](mailto:nclemmons@vdh.state.vt.us)

Jill Evans

Department of Corrections  
103 S. Main Street  
Waterbury, VT 05671  
241-2286 phone  
[jille@doc.state.vt.us](mailto:jille@doc.state.vt.us)

Mark Larson

Vermont Coalition of Batterer Intervention Services  
C/O Spectrum Youth and Family Services  
31 Elmwood Ave.  
Burlington, VT 05401  
660-8560 Ext. 103 phone  
[vtdaep@aol.com](mailto:vtdaep@aol.com)

Jill Richard

Coordinator of the Domestic Violence Unit  
SRS  
103 S. Main St.  
Waterbury, VT 05671  
241-1206 phone  
[jrichard@srs.state.vt.us](mailto:jrichard@srs.state.vt.us)

Dr. Paul Morrow

Office of the Medical Examiner  
Department of Health  
111 Colchester Ave, Baird 1  
Burlington, VT 05401  
863-7320 phone  
[pmorrow@vdh.state.vt.us](mailto:pmorrow@vdh.state.vt.us)

Alternate:

Richard P. Gaun, III

Office of Medical Examiner  
Department of Health  
111 Colchester Ave. Baird 1  
Burlington, VT 05401  
863-7320 phone  
[rgaun@vdh.state.vt.us](mailto:rgaun@vdh.state.vt.us)

Major Robert White

Department of Public Safety  
103 S. Main St.  
Waterbury, VT 05671  
244-8781 phone  
[rwhite@dps.state.vt.us](mailto:rwhite@dps.state.vt.us)

Alternate:

Capt. Bruce Lang

Department of Public Safety  
103 South Main St.  
Waterbury, VT 05671  
244-8781 phone  
[blang@dps.state.vt.us](mailto:blang@dps.state.vt.us)

Matthew Valerio  
Defender General's Office  
14-16 Baldwin Street  
Montpelier, VT 05620-3301  
828-3191/786-3803 phone  
[mvalerio@defgen.state.vt.us](mailto:mvalerio@defgen.state.vt.us)

Alternate:  
Robert Sheil  
Defender General's Office  
14-16 Baldwin Street  
Montpelier, VT 05620-3301  
802-828-3168 phone  
802-828-3163 fax  
[rsheil@defgen.state.vt.us](mailto:rsheil@defgen.state.vt.us)

Rose Pulliam  
The Vermont Network Against Domestic Violence and Sexual Assault  
PO Box 405  
Montpelier, VT 05602  
802-223-1302 phone  
802-223-6943 fax  
[rose@vtnetwork.org](mailto:rose@vtnetwork.org)

Alternate:  
Jenny Beaudin Ring  
The Vermont Network Against Domestic Violence and Sexual Assault  
PO Box 405  
Montpelier, VT 05602  
802-223-1302 phone  
802-223-6943 fax  
[jennyb@vtnetwork.org](mailto:jennyb@vtnetwork.org)

Dr. David Little  
Department of Family Practice  
235 Rowell Building  
UVM  
106 Carrigan Drive  
Burlington, VT 05405  
802-656-4330 phone  
[David.Little@uvm.edu](mailto:David.Little@uvm.edu)

Chief Tony Bossi  
Rutland Police Department  
108 Wales Street  
Rutland, VT 05701  
802-773-1840 phone  
802-770-5357 fax  
[abossi@dps.state.us](mailto:abossi@dps.state.us)



Rosemary Gretkowski  
Chittenden County State's Attorney's Office  
32 Cherry Street  
Burlington, VT 05401  
802-863-2865 phone  
802-863-7440 fax  
[rhski@sas.state.vt.us](mailto:rhski@sas.state.vt.us)

Susan Hardin  
P.O. Box 328  
Chelsea, VT 05038  
[susanhardin@mac.com](mailto:susanhardin@mac.com)

Kristina I. Michelsen  
Vermont Legal Aid  
PO Box 606  
Montpelier, VT 05601  
802-223-6377 phone  
802- 223-7281 fax  
[kmichelsen@vtlegalaid.org](mailto:kmichelsen@vtlegalaid.org)

Amy S. FitzGerald  
Assistant Attorney General  
Office of Attorney General  
109 State Street  
Montpelier, VT 05609  
802-828-5520 phone  
802-828-2154 fax  
[afitzgerald@atg.state.vt.us](mailto:afitzgerald@atg.state.vt.us)

## Appendix D - Data from 1994 - 2003

1994		
Homicides	Total	7
Domestic Violence Related	Total	5
	• Female victims	2
	• Male Victims	3
	Responsible Party	
	• Female	0
	• Male	5
Suicides related to domestic violence homicide (murder/suicide)	(manner: gun shot wound with 357 caliber)	1
Relationship	Partner (husband kills wife)	1
	Ex Partner (ex-husband kills ex-wife then self)	1
	Family Member (son kills father)	1
	Household Member	0
	Domestic violence related	2
	(Ex-boyfriend killed by new boyfriend; 2 boyfriends fighting over same girlfriend and one boyfriend kills the other)	
County Distribution	Addison	0
	Bennington	1
	Caledonia	0
	Chittenden	0
	Essex	0
	Franklin	1
	Grand Isle	0
	Lamoille	0
	Orange	0
	Orleans	0
	Rutland	0
	Washington	0
	Windham	2
Windsor	1	
Manner	Firearm (12 gauge shotgun; 357 caliber)	2
	Stabbing	1
	Fire	0
	Blunt trauma	0
	Strangulation	1
	Motor Vehicle	1
	Other	0
Children Present	At crime scene	0
	Aware of crime scene after or before the fact (5 year old asleep in car during fatality)	1
Domestic violence related homicides		71%
Percentage of those that are firearm related		40%

1995		
Homicides	Total - (2 still under investigation)	13
Domestic Violence Related	Total	7
	• Female victims	4
	• Male Victims	3
	Responsible Party	
	• Female	1
	• Male (one double homicide)	5
Suicides related to domestic violence related homicide (murder/suicide)	Total	4
	Manner - 22 caliber semi automatic rifle; asphyxia by carbon monoxide; asphyxia by fire; 30-30 Winchester rifle	
Relationship	Partner (boyfriend kills girlfriend then self; husband kills wife then self (3); wife kills husband; boyfriend kills his boyfriend)	6
	Ex Partner	0
	Family Member	0
	Household Member	0
	Domestic violence related (husband kills boyfriend of wife)	1
County Distribution	Addison	1
	Bennington	1
	Caledonia	2
	Chittenden	0
	Essex	0
	Franklin	0
	Grand Isle	0
	Lamoille	0
	Orange	0
	Orleans	0
	Rutland	1
	Washington	1
	Windham	0
	Windsor	1
Manner	Firearm (22 caliber semiautomatic rifle; 30-30 Winchester rifle; 22 caliber pistol)	3
	Stabbing	0
	Fire	2
	Blunt trauma	1
	Strangulation	0
	Motor Vehicle	0
	Other: asphyxia (carbon monoxide)	1
Children Present	At crime scene (8 year old)	1
	Aware of crime scene after or before the fact	0
Domestic violence Related		54%
Percentage of those that are firearm related		43%

<b>1996</b>	
Homicides	Total (1 under investigation) 12
Domestic Violence Related	Total 8
	• Female victims 4
	• Male Victims 4
	Responsible Party
	• Female 0
	• Male (two double homicide) 6
Suicides related to domestic violence homicide (murder/suicide)	Total 3 (manner: handgun (2); 9 mm pistol)
Relationship	Partner (husband kills wife) 1
	Ex Partner 2 (ex-boyfriend kills ex-girlfriend; ex-boyfriend kills ex-girlfriend then self)
	Family Member: 2 (step-dad kills step-daughter; uncle stabs nephew)
	Household Member 1 (caretaker/boyfriend kills girlfriend's baby and then self)
	Domestic violence related 2 (ex-boyfriend kills new boyfriend of ex-girlfriend then self; husband kills wife's boyfriend)
County Distribution	Addison 4
	Bennington 0
	Caledonia 0
	Chittenden 3
	Essex 0
	Franklin 0
	Grand Isle 0
	Lamoille 0
Orange 1	
Orleans 0	
Rutland 0	
Washington 0	
Windham 0	
Windsor 0	
Manner	Firearm 5 (9 mm pistol (2); 32-20 revolver pistol (2); large caliber handgun)
	Stabbing 2
	Fire 0
	Blunt trauma 1
	Strangulation 0
	Motor Vehicle 0
	Other 0
<u>Children Present</u>	At crime scene 2 (1 incident where 8 and 10 year old at crime scene)
	Aware of crime scene after or before the fact 3 (1 incident where 3 children in apartment and fatality occurred outside in parking lot)
Domestic violence Related	67%
Percentage of those that are firearm related	62.5%

<b>1997</b>	
Homicides	Total 11
Domestic Violence Related	Total 7
	• Female victims 4
	• Male Victims 3
	Responsible Party
	• Female 2
	• Male (two double homicide) 5
Suicides related to domestic violence related homicides (murder/suicide)	Total 2 (manner: 12 gauge shotgun; 22 caliber revolver)
Relationship	Partner 2 (husband kills wife then self; boyfriend kills girlfriend)
	Ex Partner: (separated husband kills wife) 1
	Family Member: 2 (Mother kills two children (8 and 4) and then kills self)
	Household Member: 0
	Domestic violence related 2 (Responsible party kills person after argument about person abusing responsible party's girlfriend; new boyfriend kills girlfriend's separated husband)
County Distribution	Addison 0 Lamoille 0
	Bennington 0 Orange 2
	Caledonia 1 Orleans 0
	Chittenden 0 Rutland 2
	Essex 0 Washington 1
	Franklin 0 Windham 0
	Grand Isle 0 Windsor 1
Manner	Firearm: 7 (12 gauge shotgun (2) and in one case decedent had 30-30 rifle; 22 caliber revolver (3); 308 savage caliber rifle; undetermined gunshot wound)
	Stabbing 0
	Fire 0
	Blunt trauma 0
	Strangulation 0
	Motor Vehicle 0
	Other 0
Children Present	At crime scene 1 (9 year old outside residence and heard gunshot and went inside residence where crime scene was)
Domestic Violence Related 64%	
Percentage of those that are firearm related: 100%	

1998	
Homicides	Total 12
Domestic Violence Related	Total 7
	• Female victims 4
	• Male Victims 3
	Responsible Party
	• Female 1
	• Male (two double homicide) 6
Suicides related to domestic violence homicides (murder/suicide)	Total 3 (Manner: 357 revolver; 12 gauge shotgun; 45 caliber handgun)
Relationship	Partner (boyfriend kills his boyfriend; boyfriend kills girlfriend; husband kills wife) 3
	Ex Partner (ex-boyfriend kills ex-girlfriend then self (2)) 2
	Family Member (stepdaughter kills step-dad) 1
	Household Member 0
	Domestic violence related (separated husband kills wife's current boyfriend then self) 1
County Distribution	Addison 1
	Bennington 0
	Caledonia 0
	Chittenden 2
	Essex 0
	Franklin 1
	Grand Isle 0
	Lamoille 1
	Orange 0
Orleans 0	
Rutland 1	
Washington 0	
Windham 0	
Windsor 1	
Manner	Firearm (357 revolver; 22 caliber handgun; 12 gauge sawed off shotgun; 45 caliber handgun) 4
	Stabbing 0
	Fire 0
	Blunt trauma 2
	Strangulation 1
	Motor Vehicle 0
	Other 0
Children Present	At crime scene 3 1 incident with 7 year old; 1 incident with 12 and 14 year old)
Domestic Violence related: 58%	
Percentage of those that are firearm related 57%	

1999				
Homicides	Total - (1 under investigation)		18	
Domestic Violence Related	Total		10	
	• Female victims		6	
	• Male Victims		4	
	Responsible Party			
	• Female		3	
	• Male		9	
	(Note: 2 cases with 2 responsible parties)			
Suicides related to domestic violence homicides (murder/suicide)	Total (Manner: stabbing; 380 caliber semiautomatic handgun)		2	
Relationship	Partner (husband kills wife then self (2))		2	
	Ex Partner (separated husband kills wife)		1	
	Family Member (parents kill son (2); son kills mom)		3	
	Household Member (caretaker kills foster baby; roommate kills roommate)		2	
	Domestic violence related (wife kills husband's girlfriend; ex-boyfriend kills current boyfriend of ex-girlfriend)		2	
County Distribution	Addison	1	Lamoille	0
	Bennington	0	Orange	0
	Caledonia	0	Orleans	1
	Chittenden	5	Rutland	2
	Essex	0	Washington	0
	Franklin	0	Windham	0
	Grand Isle	0	Windsor	1
<u>Manner</u>	Firearm (380 caliber semiautomatic handgun; 16 gauge shotgun; 303 savage rifle; 20 gauge shotgun)		4	
	Stabbing		2	
	Fire		0	
	Blunt trauma		2	
	Strangulation		0	
	Motor Vehicle		0	
	Other		2	
<u>Children Present</u>	At crime scene		0	
	Aware of crime scene after or before the fact:		0	
Domestic Violence related		56%		
Percentage of those that are firearm related		40%		

2000				
Homicides	Total		16	
Domestic Violence Related	Total		8	
	• Female victims		4	
	• Male Victims		4	
	Responsible Party			
	• Female		3	
	• Male		7	
	(Note: 2 responsible parties in 2 cases)			
Suicides related to domestic violence homicides (murder/suicide)	Total		1	
	(Manner: hung himself after arrest)			
Relationship	Partner		3	
	(boyfriend kills girlfriend; husband kills wife; wife kills husband)			
	Ex Partner (divorced wife kills ex-husband)		1	
	Family Member		2	
	(foster son and daughter kill mother; stepson kills step dad)			
	Household Member		0	
Domestic violence related			2	
	(police kill in response to domestic assault offense; boyfriend of mother killed by son)			
County Distribution	Addison	1	Lamoille	0
	Bennington	1	Orange	0
	Caledonia	1	Orleans	1
	Chittenden	0	Rutland	3
	Essex	0	Washington	1
	Franklin	0	Windham	0
	Grand Isle	0	Windsor	0
Manner	Firearm		4	
	(22 caliber rifle; 40 caliber rifle; 9 mm handgun; 357 gun)			
	Stabbing		3	
	Fire		0	
	Blunt trauma		0	
	Strangulation		1	
	Motor Vehicle		0	
Other		0		
Children Present	At crime scene		2	
	(1 case where 15 month old was at crime scene and 6 year old in residence when crime was committed)			
Domestic violence related			50%	
Percentage of those that are firearm related			50%	

:



<b>2001</b>	
Homicides	Total (1 under investigation) 13
Domestic Violence Related	Total 5
	• Female victims 4
	• Male Victims 1
	Responsible Party
	• Female 1
	• Male 4
Suicides related to domestic violence homicide (murder/suicide)	Total 0
Relationship	Partner 0
	Ex Partner 0
	Family Member 3 (son kills mother (2); mother kills child)
	Household Member 1 (foster care mother killed by foster person)
	Domestic violence related 1 (separated husband kills wife's new boyfriend)
County Distribution	Addison 0
	Bennington 0
	Caledonia 0
	Chittenden 1
	Essex 0
	Franklin 0
	Grand Isle 0
	Lamoille 1
Orange 0	
Orleans 1	
Rutland 1	
Washington 0	
Windham 0	
Windsor 1	
Manner	Firearm 3 (12 gauge shotgun; 45 caliber handgun; 30-06 rifle)
	Stabbing 0
	Fire 0
	Blunt trauma 1
	Strangulation 0
	Motor Vehicle 0
	Other (asphyxia) 1
Children Present	At crime scene 2 (1 case where 10 and 15 year old in residence when fatality occurred)
Domestic Violence Related 38%	
Percentage of those that are firearm related 60%	


2002				
Homicides	Total (1 case under investigation)	10		
Domestic Violence Related	Total	1		
	• Female victims	1		
	• Male Victims	0		
	Responsible Party			
	• Female	0		
	• Male	1		
Suicides related to domestic violence homicide (murder/suicide)	Total	0		
Relationship	Partner (husband kills wife)	1		
	Ex Partner	0		
	Family Member	0		
	Household Member	0		
	Domestic violence related	0		
County Distribution	Addison	0	Lamoille	0
	Bennington	0	Orange	0
	Caledonia	0	Orleans	0
	Chittenden	0	Rutland	0
	Essex	0	Washington	0
	Franklin	1	Windham	0
	Grand Isle	0	Windsor	0
Manner	Firearm: (12 gauge shotgun)	1		
	Stabbing	0		
	Fire	0		
	Blunt trauma	0		
	Strangulation	0		
	Motor Vehicle	0		
	Other	0		
Children Present	At crime scene	0		
	Aware of crime scene after or before the fact	0		
Domestic Violence Related		10%		
Percentage of those that are firearm related		100%		

2003				
Homicides	Total - (2 cases under investigation)	15		
Domestic Violence Related	Total	9		
	• Female victims	4		
	• Male Victims	5		
	Responsible Party			
	• Female	0		
	• Male	9		
Suicides related to domestic violence homicides (murder/suicide)	Total	0		
Relationship	Partner (boyfriend kills girlfriend)	1		
	Ex Partner (ex-boyfriend kills ex-girlfriend; ex-husband kills ex-wife)	2		
	Family Member (uncle kills nephew; son kills father; step dad kills stepson)	3		
	Household Member (girlfriend of responsible party's son is killed)	1		
	Domestic violence related (current boyfriend of ex-girlfriend killed; law enforcement kill domestic violence suspect)	2		
County Distribution	Addison	1	Lamoille	0
	Bennington	0	Orange	0
	Caledonia	2	Orleans	1
	Chittenden	1	Rutland	2
	Essex	0	Washington	1
	Franklin	0	Windham	1
	Grand Isle	0	Windsor	0
Manner	Firearm (22 caliber handgun (3); 44 caliber handgun and 12 gauge shotgun (2); 44 caliber handgun and decedent had shotgun; 20 gauge shotgun)	7		
	Stabbing	1		
	Fire	0		
	Blunt trauma	1		
	Strangulation	0		
	Motor Vehicle	0		
	Other	0		
Children Present	At crime scene: (child under 10 present at scene)	1		
	Aware of crime scene after or before the fact (child escorted away from scene before fatality)	1		
Relief From Abuse Orders in Effect	None in effect at time of fatality			

**2003**

Federal Gun Control Act Applicable	Not applicable in 7 firearm related fatalities
Domestic Violence Related	60 %
Percentage of those that are firearm related	78 %

## Appendix E: Commission Case Referral Form

	<b>DOMESTIC VIOLENCE FATALITY REFERRAL FORM</b> Domestic Violence Fatality Review Commission Office of the Attorney General - Criminal Division 109 State Street - Montpelier, VT 05609		OFFICIAL USE ONLY	
			Received	By
<b>INSTRUCTIONS</b>				
Please answer the questions below as completely as possible to assist the Commission in determining whether we are able to review this death. Please note that you can refer this case to the Commission but, by statute, we cannot review a case until the court proceedings are over and the investigation is closed. In the meantime, we can include the case for statistical purposes. But depending upon the legal status of your referred case there may be a significant delay before the Commission could consider it for review.				
Additionally, if you need assistance completing this form or would like to communicate the information in a different manner please call the Office of Attorney General, Criminal Division, at (802) 828-5512. This form is also available on the Office of Attorney General's web page at <a href="http://www.state.vt.us/atg/">http://www.state.vt.us/atg/</a> .				
<b>PLEASE PRINT ALL INFORMATION</b>				
Name of Victim (including aliases)			Name of Parent/Guardian (if under 18)	
Date of Birth (or approximate age)		Date of Death	Town/City where death occurred	
Address of Victim (if known)	Street	City	State	
Describe how death occurred including any history of domestic violence or abuse (please note that the abuse does not have to be documented through official sources such as the police or courts):				
Person you believe is responsible for this death (including aliases)				
Date of Birth or approximate age of person you believe is responsible			Relationship of the victim to the person you believe is responsible	
Other people having information about this death: (use another sheet if necessary)				
Name	Address		Phone	
Name	Address		Phone	
Was this death investigated and if so by whom:				
A short explanation why you want the death reviewed (use additional pages if necessary.)				
The Commission welcomes any other information you may wish to provide which would help us understand the history and circumstances of the fatality. Anonymous referrals can be made as long as there is sufficient information to be able to identify the fatality; however, if possible, contact information for the person making the referral would be appreciated.				
<b>SUBMITTED BY</b>				
Name				
Address		Town/City	State	
Contact Phone 1			Contact Phone 2	
<b>Send completed forms to:</b> Office of Attorney General, 109 State Street, Montpelier, VT 05609 ATT: Criminal Division/Domestic Violence Fatality Review Commission				



STATE OF VERMONT  
OFFICE OF THE ATTORNEY GENERAL  
**DOMESTIC VIOLENCE FATALITY REVIEW COMMISSION**

The Domestic Violence Fatality (Death) Review Commission is established in the Office of Attorney General in consultation with the Council on Domestic Violence under 15 VSA Sec. 1140.

The purposes of the Commission are (A) to examine the trends and patterns of domestic violence-related deaths in Vermont; (B) to identify barriers to safety, and strengths and weaknesses in communities and systemic responses to domestic violence; (C) to educate the public, service providers and policymakers about domestic violence deaths and strategies for intervention and prevention; and (D) to recommend policies, practices and services that will encourage collaboration and reduce fatalities due to domestic violence.

All proceedings and records of the Commission are confidential and are not subject to subpoena, discovery or introduction into evidence in a civil or criminal action. Records include oral and written communications.

The Commission shall report its findings and recommendations in a public report. The Report shall contain general statistical data regarding deaths as well as findings and recommendations related to case reviews but will not contain case specific information. The report shall examine general trends and patterns with the goal of reducing domestic violence related deaths.

Questions or comments concerning the Commission can be directed to:

Office of the Attorney General  
Criminal Division  
109 State Street  
Montpelier, Vermont, 05609.  
Telephone (802) 828-5512

On the Web - <http://www.state.vt.us/atg/>

⋮